

## APARTMENT 21, MASTER WILLIAMS PLACE

FOLKESTONE, CT20 1FF



**£975 PER MONTH**

Welcome to this contemporary apartment located in the desirable Master William's Place, Folkestone. This new build property, completed in 2025, offers a generous 554 square feet of stylish living space, making it an ideal choice for individuals or couples seeking a modern home in a vibrant area.

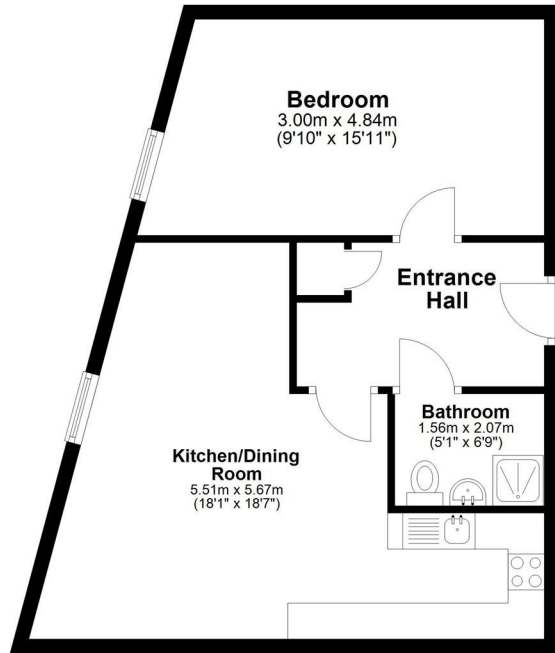
The apartment features one reception room and one bedroom, designed with a focus on comfort and functionality. The well-equipped kitchen boasts high-quality Bosch appliances, ensuring that you have everything you need to prepare delightful meals while enjoying a sleek and modern environment. The thoughtful layout enhances the overall living experience, making it both practical and enjoyable.

One of the standout features of this property is its exceptional internet connectivity, offering Folkestone's first-ever 10Gb/s Lease Line. This provides residents with super-fast Wi-Fi access, perfect

**WEST END  
ESTATES**  
LETTINGS AND PROPERTY MANAGEMENT

## Ground Floor

Approx. 51.5 sq. metres (554.9 sq. feet)



Total area: approx. 51.5 sq. metres (554.9 sq. feet)

Whilst every attempt has been made to ensure the accuracy of the floorplan contained here, measurements of doors, windows, rooms and any other items are approximate and no responsibility is taken for any error, omission or mis-statement. This plan is for illustrative purposes only and should be used as such by any prospective purchaser. The services, systems and appliances shown have not been tested and no guarantee as to their operability or efficiency can be given.  
Plan produced using PlanUp.



Energy Efficiency Rating		
	Current	Potential
Very energy efficient - lower running costs		
(92 plus) <b>A</b>		
(81-91) <b>B</b>		
(69-80) <b>C</b>		
(55-68) <b>D</b>		
(39-54) <b>E</b>		
(21-38) <b>F</b>		
(1-20) <b>G</b>		
Not energy efficient - higher running costs		
<b>England &amp; Wales</b>	EU Directive 2002/91/EC	

**EPC Rating: B    Council Tax Band: A**

Agents Note: Whilst every care has been taken to prepare these particulars, they are for guidance purposes only. All measurements are approximate and are for general guidance purposes only and whilst every care has been taken to ensure their accuracy, they should not be relied upon and potential buyers/tenants are advised to recheck the measurements

West End Estates Folkestone  
7 Sapper Row  
Folkestone  
Kent  
CT20 3WT

01303 478777  
office@westend-estates.co.uk

**WEST END  
ESTATES**  
LETTINGS AND PROPERTY MANAGEMENT